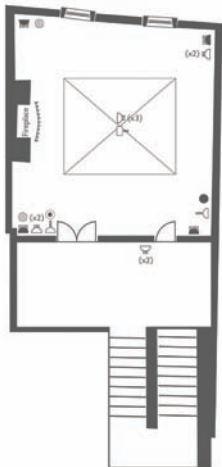


# Georgian Boardroom



The Georgian Boardroom is located on the first floor, above the Art Gallery. This means that it is the perfect venue for a private and confidential meeting. It offers floor to ceiling windows with views over the River Liffey and high Georgian ceilings. This room is chic and stylish with a contemporary chandelier, cherry red leather office chairs and a heavy mahogany table. There is a mezzanine area outside the room which is perfect for tea and coffee breaks and this overlooks the Courtyard Garden. The Georgian Boardroom can seat up to 14 delegates boardroom style.



- 55m<sup>2</sup>
- L: 6.3m
- W: 8.7m
- Ht: 3.68m
- Window
- Plasma Screen
- 3 Pin Plug
- 5 Amp Plug
- Lap Top Connection
- ISDN Line
- Light Switch
- Air Con Control
- Phone
- Boardroom Table (seating 14)

The Georgian Boardroom offers the following facilities:

- Natural daylight
- Air conditioning
- Black-out blinds
- LCD TV Screen
- Flipchart
- Complimentary 900 mbps WiFi
- Barco ClickShare Device
- Poly Studio Video Conferencing Technology
- Complimentary mineral water on arrival
- Notepads and pens
- VGA / HDMI and Thunderbolt connections

	Dimensions Meters	Dimensions Feet	Theatre	Classroom	U-Shape	Boardroom	Cabaret	Banquet	Reception
Georgian Boardroom	58.4sqm L: 6.3 W: 8.7 H: 3.7	590sqft L: 20.7 W: 28.5 H: 12.1	•••	•••	•••	14	•••	•••	•••

Ormond Quay, D1, D01 K5X5 [www.morrisonhotel.ie](http://www.morrisonhotel.ie)  
 Contact us at +353 1 887 2458 or at [events@morrisonhotel.ie](mailto:events@morrisonhotel.ie)

@MORRISONHOTELDUBLIN @MORRISONDUBLIN @MORRISONDUBLIN

